

RELATIONSHIP REPORT OF PENELOPE CRUZ AND TOM CRUISE

INTRODUCTION



This report has been written to introduce you to the concepts of astrology and how to get started in relationship astrology. Astrology is a complex and meaningful science which takes years to study and apply successfully; however, we would like to whet your appetite with this report, and encourage you to deepen your understanding through other means.

Astrology is a study of the connection between planets and life on Earth. It is based on a concept that energy patterns form between other planets and Earth and that these energies affect our lives as individuals and communities.

An astrological chart, also known as a horoscope, natal chart, or birth chart, records the relationship between the planets and the signs of the Zodiac. Charts can be calculated for the birth of a person, a community, an event or anything that seems momentous. The horoscope is as individual and unique as a fingerprint.

When using these interpretations, please bear in mind that, inevitably, every chart will contain some contradictory influences, and as a result certain interpretations of different items in the same chart may seem difficult to reconcile. However, this may still be an accurate reflection your chart, as it is likely that you do experience conflicting desires, events and circumstances in your life. Usually it is the responsibility of an astrologer to synthesise these apparent contradictions in order to present a cohesive and realistic interpretation of the dilemmas of the chart.

Please also be aware of the fact that each person has positive and negative influences in the chart, and therefore in their lives. The challenge is to accept and overcome the negative influences, so that we can successfully focus on the positive traits. This report outlines the influence of both people's charts on each other. This is called relationship synastry meaning the comparison of two horoscopes and the correlations discovered. It is likely that the report will show both the strengths and weaknesses of the relationship synastry. Any advice given is meant to be an aid to a person taking responsibility for their own lives and their own choices within a relationship. The ultimate decision rests with each individual. The author and publisher accept no liability for any adverse affects of this report.

Australian astrologer Stephanie Johnson has written the text in this report. Stephanie holds a Bachelor of Arts (Journalism) and was a journalist in Australia, England and the USA for 15 years before becoming a professional astrologer. She is currently a consulting astrologer, is Company Director of Esoteric Technologies Pty Ltd in Adelaide, Australia and Editor of the Australian Data Collection. She holds the FAA Practitioners' qualification and was a former editor of the Journal of the Federation of Australian Astrologers. Stephanie has also completed the

Robert Zoller Certificate in Medieval Astrology. In 2000 she was awarded an FAA Diploma for her share in the creation of the Solar Fire range of astrological software products, with partner Graham Dawson.

INDIVIDUAL RELATING TRAITS



This section looks at each person's individual relationship concerns in their own personal birth chart. Every individual brings certain needs and expectations into a union, which affect his or her ability to feel loved and supported. This in turn affects the nature and course of the relationship.

Traits of Penelope

Venus is in the 9th House

When the planet Venus is placed in the ninth house of your birth chart relationships are a source of spiritual and philosophical inspiration. It's important that your primary relationship be with a person who can meet you on the same intellectual level, or be a willing student of yours. Intellectual matters are not a strain, but are a source of great pleasure. Whereas some people are focused on their daily lives, you prefer to be thinking about matters further afield. Therefore you enjoy activities that stretch your mind and help you escape from the mundane world. You enjoy traveling to other countries, meeting people and experiencing different cultures. Religions also hold an intellectual interest. Your travels abroad are likely to be successful. You're also hospitable and enjoy meeting people from other countries, who are more than happy to return your hospitality at a later date. You seem to spend so much time traveling to and from other countries that your friends are hardly surprised to hear that you're likely to marry a foreigner. In some cases you marry a person with spiritual, scientific, literary or artistic inclinations. These inclinations reflect your own interests. Academic study and lectures also hold a great appeal, again because they are intellectually satisfying. If you enjoy reading, then you're more likely to read a literary work or serious study, rather than a light novel. Depending on other influences in your chart, you're likely to form a good primary relationship and enjoy good fortune in life.

Venus is in Pisces

With Venus in the sign of Pisces you're sympathetic and understanding in your relationships, often letting your kind heart rule your head. You are charitable and like to help others, perhaps even choosing a career in which you take care of those less fortunate than yourself. You feel drawn to nurture the underdogs in society, which is an admirable intent as long as you're careful to ensure that your trusting nature isn't being taken advantage of. It's important that you constantly remind yourself of your own personal power. This helps you avoid any tendency to put yourself at risk or fall into a victim role. This is also true for your primary relationship. You're a kind and loving person, and need to make sure that you enter into a relationship with someone who appreciates these qualities. Fortunately the planet Venus is honoured in the sign of Pisces. Therefore you're likely to eventually fair well in your primary relationship. With the right person you'll enjoy sharing inspirational activities with your partner, whether it be

listening to beautiful music or visiting an art gallery, or taking a peaceful walk by the ocean.

Venus is Trine The Moon

You enjoy comfortable relationships with other people because of the favourable combination of the Moon and Venus in your birth chart. A charming and prudent person, you enjoy the company of other people, and they respond favourably. You're likely to enjoy success in your primary relationship, choosing someone who feels comfortable and companionable. You're also likely to benefit from your relationships with women.

Traits of Tom

Venus is in the 11th House

When the planet Venus is placed in the eleventh house of your birth chart friendships are an important component of your life - a great source of satisfaction and pleasure. Your marriage partner may have initially been a friend, who later became a lover. A popular person, you enjoy a wide variety of friends from all walks of life, who seem to take up a considerable amount of your time. Your friendships with women may be more prominent than those with men. At times you feel that you owe your success to your friends or your life partner, and this is probably true. Your relationships are beneficial, contributing to your happiness and helping you achieve your hopes and wishes. This may even involve financial gifts or favours. It's also possible that groups and clubs feature in your life. You enjoy belonging to a group of like-minded people, feeling supported by the relationships that are formed. This could involve you taking a prominent role in a group, or simply working quietly in the background. Either way you're particularly keen on becoming a member of a group with goals that benefit humanity. You may meet your spouse through such a group, or share your group activities with your partner.

Venus is in Leo

With Venus in the sign of Leo you're affectionate and passionate in your primary relationship, enjoying a sense of play and romance. You're likely to ardently pursue your partner basking in the delights and pleasures of love, particularly in the first romantic stage. Your partner is likely to benefit from your generous and thoughtful nature, enjoying being the recipient of your spontaneous gestures. However, you do like your loved one to show an appropriate amount of appreciation, and your enthusiasm for the relationship is also likely to wane if your loved one doesn't return your affections in full, also showering you with gifts and attention. With the right person you'll take great pride in the relationship, eager to share your happiness with your friends. You enjoy attending social outings where you can take real pleasure in the company of other people. Anything that provides entertainment and fun will suffice, although you may prefer attending arts activities, such as dance, theatre and art galleries. Depending on other aspects in your birth chart, you may be extraverted or introverted in your relationships. Either way it's difficult for others to resist your joyful approach to relationships, and as a result you're likely to benefit through your relationships with other people, in particular through people holding high places in society.

Venus is Conjunct Uranus

The planets Venus and Uranus are connected in your birth chart indicating that you value freedom and individuality in your most intimate relationships. In fact you're determined that your primary partner recognize your individual rights. You won't allow anyone to curb your sense of freedom. You're attracted to an unusual, active or lively partner, rather than someone staid. For this reason your primary partner is likely to be inventive, extraordinary or involved in an unusual occupation. This isn't everyone's idea of an ideal partner, but it suits you. You seek spontaneity and intellectual stimulation from your primary relationship. Depending on other influences in your chart, commitment isn't a major part of your vocabulary, and can be something that you tend to avoid, preferring to be "footloose and fancy free". It's likely that you're afraid of losing your independence, or perhaps you simply don't like the confines of a conventional relationship. Fortunately you're likely to have many friends and potential partners. Your bright and

magnetic personality attracts potential life partners like moths to a flame. You enjoy socialising and have a wide circle of friends, and believe that it's important that a life partner share your friendships. Your best friend should be your partner, as far as you're concerned.

PERSONAL ISSUES



This section looks at the interaction between two people and their two birth charts. It notes the nature of the relationship, whether it is likely to be a successful personal relationship or whether the forces at work are suggesting a less intimate bond. In other words how do these two people come together on a intimate level?

Penelope's Moon is Conjunct Tom's Moon

The Moon is considered one of the personal planets in relationship astrology. A positive combination of personal planets is believed to augur well for intimate unions. Therefore this is an ideal combination for a close, personal relationship whether it is a close friendship or love relationship. Emotional bonds are important in personal relationships and when two people's Moons are in a positive aspect there is a feeling of empathy and understanding which is required for intimacy. Penelope and Tom can relax in the knowledge that they are compatible on an emotional level. Instinctively they feel comfortable in each other's company. They know how each other feels and are willing to consider their loved one's feelings along with their own. Penelope and Tom enjoy spending time in each other's company because intuitively they understand each other. At times they may feel surprised at the ease with which they both are able to spend time together. Of course all relationships undergo times of strain and tension. However, in times of anxiety Penelope and Tom both seek solace in the same manner thereby reducing the possibility of extra tensions resulting through misunderstandings. In fact simply being together comforts them. This is a most rewarding personal relationship.

Penelope's Moon is Sextile Tom's Mars

This combination of planets denotes a relationship that is exciting and animated. Penelope and Tom's discussions are lively and impassioned and their shared pastimes are also likely to be energetic and fun. Penelope and Tom enjoy spontaneity and both tend to be impulsive when together. Both of them feel that their lives have become more effervescent with the advent of this relationship. Penelope is most likely to feel that Tom brings excitement into her life. Penelope is aware that Tom's drive and energy contributes positively to her life. Whereas Tom feels inspired by the relationship to achieve his goals. Tom acknowledges that Penelope's support and understanding is helping him to advance in life. There is also likely to be a strong sexual attraction that helps to add a little spice to life. However, this sexual attraction is most powerful when both Penelope and Tom are feeling comfortable within the association. The attraction can lose its spark when there is emotional tension. Fortunately, this does not happen often. Penelope and Tom are mostly able to resolve their differences and enjoy an enlivened and satisfying union.

Penelope's Moon is Sextile Tom's Ascendant

It is significant in relationship astrology when one person's planet makes contact with the Ascendant in another person's chart. In this case Penelope's Moon is combining with Tom's Ascendant indicating that this is a significant

personal relationship. Penelope and Tom feel strongly drawn to each other, enjoying a strong and loving bond. This relationship satisfies the emotional needs of Penelope, who feels comforted by relating to Tom. Penelope gains new insights about herself and relating through her association with Tom. In turn Tom is attracted to Penelope's willingness to be vulnerable and loving, and feels supported by this union. While this combination is most likely to indicate an intimate love union, it can also augur well for friendships, family relationship and work associations.

Tom's Moon is Square Penelope's Sun

'Opposites attract' could be the theme for this combination of personal planets. There is an instant spark when Penelope and Tom meet, whether they choose to enjoy a friendship or a more intimate relationship. The world seems more exciting when they are together. When together Penelope and Tom are able to broaden their horizons in ways they had not thought possible. Each one seems to fill a void deep inside the other. In astrology it is considered important to have a combination of personal planets in order to enjoy a deep relationship, but this can be a difficult combination once the initial excitement has worn off. Friction easily arises and what was once attractive becomes irritating. The success of this relationship largely depends on each person's ability to accept the other person's differences. Tom may eventually have difficulty understanding Penelope's emotional nature. Tom may feel impatient and frustrated by the limitations placed on him by Penelope. Penelope may feel overwhelmed by Tom's personality. The initial excitement of the association with someone so opposing in nature may be replaced by feelings of insecurity. It's important for both Penelope and Tom to continue to appreciate each other's differences at all times and to realise that this relationship is potentially very rewarding if the difficulties can be faced and resolutions found.

Tom's Moon is Square Penelope's Mercury

Arguments can cause upset feelings in a relationship with this combination of planets. All types of associations can suffer some setbacks under this influence, but personal relationships are particularly fraught with difficulties. Friction seems to result no matter how Penelope and Tom try to approach each other on intimate matters. Penelope and Tom's relationship suffers because of unspoken problems, or perhaps either Penelope or Tom speaks their mind too often. Either way the problem is communication. No matter how hard both Penelope and Tom try they cannot seem to understand each other's way of seeing things and how each other feels. Misunderstandings occur when Penelope expresses her feelings. Tom thinks that Penelope is expressing thoughts and ideas and is ready for a good discussion. Penelope feels misunderstood. As a result Penelope and Tom alternate between passion and rationality, having difficulty understanding the other person. Penelope and Tom's behaviour seems at odds with their needs, and they do not seem to be able to comfortably settle down in the relationship. On a more positive note Penelope and Tom may not mind a little friction in their intimate relationship. However, it's more likely that Penelope and Tom would both do well to work on their communication skills. As a result Penelope and Tom can develop skills which help to overcome the problems enabling them to better understand each other.

Penelope's Sun is Sextile Tom's Sun

When two people's Sun signs are connecting in a positive manner it augurs well for any relationship. However, it is an ideal combination for a close, personal relationship whether it be a close friendship or love relationship. There is an instant rapport and the two people seem to shine more in their own lives as a result of such a connection. Penelope and Tom enjoy each other's company and feel that the other person is giving something special to the relationship, adding a little sunshine to their lives. Penelope and Tom probably experienced an instant attraction when they first met, warming to each other's personalities. This is because Penelope and Tom have a lot in common and tend to view the world in the same fashion. Sharing a common purpose they work and play well together. It is easy for them to co-operate, creating harmony in shared enterprises and activities. In fact Penelope and Tom are likely to experience luck and good fortune in joint projects. There can be a tendency for friendly rivalry, but this usually brings out the best in both Penelope and Tom. All in all it is a very successful combination of personal planets.

Tom's Sun is Conjunct Penelope's Mars

This combination of the Sun and the planet Mars is a positive one for a working partnership that calls for concentrated effort on a joint project. It also ignites a strong sexual spark for a personal relationship, one that continues to flare throughout the union. It is an exciting combination. There is never a dull moment when Penelope and Tom are together. They love and fight with energy. Penelope and Tom are hard working and energetic, achieving more together than they can on their own. Together Penelope and Tom are able to tackle most of life's challenges with confidence and a positive attitude, taking the initiative, rather than sitting back and waiting for things to happen. Together they also enjoy taking few risks in life, particularly ones that satisfy their sense of adventure. They need only be wary of becoming too impulsive, of taking unnecessary risks that lead to dangerous ground. Penelope feels that Tom provides the impetus and drive to help achieve her full potential. Penelope is aware that her personality also helps Tom achieve his goals. Tom is excited by Penelope's powerful personality and is inspired in his ambitions. This is certainly a progressive relationship that makes an impact on both Penelope and Tom and those around them.

Tom's Sun is Conjunct Penelope's Ascendant

It is significant in relationship astrology when one person's planet makes contact with the Ascendant in another person's chart. In this case Penelope's Sun is combining with Tom's Ascendant indicating that this is a significant personal relationship. Penelope and Tom feel strongly drawn to each other, experiencing a sense of completeness in each other's company. Penelope can really shine through her association with Tom. She appreciates the benefits that this union brings into her life and the way in which Tom helps her achieve her personal goals. In turn Tom has a greater sense of well-being through his association with Penelope. He welcomes the sunnier aspects of Penelope's personality and appreciates their mutual respect and affection. While this combination is most likely to indicate an intimate love union, it can also augur well for friendships, family relationship and work associations.

Tom's Mercury is Square Penelope's Venus

A positive blend of the personal planets of Mercury and Venus is a desirable one for an intimate union, and certainly advantageous to any association that requires harmony and collaboration. Therefore it is unfortunate that this combination is a difficult one. This association of planets indicates incompatibility in a relationship. No matter how hard Penelope and Tom try they find it hard to relax in each other's company. Disharmony seems to infiltrate their union at every turn. The problem is that Penelope and Tom simply cannot find any common ground for agreement. Their opinions and values clash, which makes any shared activities fraught with tension. In particular Tom feels that he is subjected to Penelope's unnecessary criticism. Tom feels unappreciated and lonely, unable to share warm and loving moment required in his relationship. On the other hand Penelope believes that she cannot express his opinions freely without being misunderstood. Penelope loses confidence in her communication abilities and possibly withdraws her attention from the relationship. The extent of the difficulties in this relationship depends on other aspects of Penelope and Tom's association. The positive side is that Penelope and Tom are attracted to each and can work towards improving their communication skills. In this way they may learn to value each other.

Penelope's Venus is Sextile Tom's Mars

This is the ideal combination for a love union because it creates a strong sexual attraction and compatibility. Penelope and Tom are likely to fall in love at first sight enjoying a passionate union, the type of love affair featured in romance novels. The durability of the relationship depends on other connections between Penelope and Tom. However, if the love union is long term, both Penelope and Tom can rely on the sexual attraction to help them through troubled times. Penelope and Tom enjoy spending time together, in particular welcoming pleasure trips, romantic outings and artistic activities. They may also find pleasure in a joint creative project. Tom is likely to be the more assertive partner, both in bed and out of bed. Tom enjoys taking the lead and Penelope is happy to acquiesce. While this combination is ideal for marriage or love affairs, it can also be a creative connection for friendships or work associations that involve working on an artistic project. However, it is important that both individuals remain focused on the creative project at hand unless a sexual flirtation is welcomed and appropriate.

PRIMARY FORCES



In addition to the intimate aspect of a relationship, there are usually a number of fundamental driving forces, which can be either major challenges or inspirations to the individuals involved. This section looks at how Penelope and Tom stimulate and provoke each other.

Tom's Moon is Trine Penelope's Neptune

Romance is a major theme in a union which involves the Moon and the planet Neptune. With this combination of planets Penelope and Tom both feel that they are meant to be together. Perhaps they believe that it is a union of their souls. This is the height of romantic love. Penelope and Tom intuitively understand each other and as a result their relationship proceeds from the start in a gentle and loving manner. They may simply enjoy relaxing in each other's company or together Penelope and Tom may enjoy creative and harmonious pastimes which enhance their union bringing joy and fulfilment. They could work jointly on an artistic, musical or spiritual project, or simply share an inspirational hobby. Either way, they are drawn to each other in a way that is not logical. At times they may even feel as though they have a psychic connection. Penelope feels inspired by Tom to the point of longing to be in Tom's company. Tom intuitively understands Penelope's emotional needs and relates to Penelope in a caring manner. This is a harmonious relationship. Problems can occur if Penelope becomes overly dependent on Tom. However, on the whole it augurs well for a personal relationship which thrives on mutual love and understanding.

Tom's Moon is Sextile Penelope's Pluto

This is an intense and powerful relationship. Penelope and Tom feel a strong attraction to each other, one that seems to constantly draw them together. Sexual attraction may be powerful. Penelope's and Tom's deep feelings for each other need to be nurtured in a loving manner in order for the union to be long lasting. This relationship can be a positive or a negative experience, depending on how Penelope and Tom handle intense feelings. Some individuals thrive on intensity, while others feel threatened and powerless. Penelope is likely to feel that Tom has transformed her life in some way. It's possible that Tom has changed the way that Penelope feels about the world, making her conscious of things that have been bubbling under the surface for a long time. Life is not the same for Penelope once she encounters Tom. Penelope is able to see through the explosive behaviour to the true heart of Tom and to nurture Tom's goodness in ways that he has not previously encountered. As a result Tom deeply appreciates the emotional support offered by Penelope. This is indeed a passionate union.

Tom's Moon is Square Penelope's Uranus

The saying 'expect the unexpected' could be applied to this combination of Penelope's and Tom's planets. There is an element of excitement and adventure when Penelope and Tom get together, but there is also an element of insecurity. Both Penelope and Tom enjoy the thrill of being in each other's company exploring new territories together, but many relationships start with the thrill and ardour of romance only to have it fade later. This is the

problem to be faced by Penelope and Tom. Unless they have other connections between more permanent or personal planets in their charts, Penelope and Tom are in danger of a growing discontent. There is a lack of stability that feeds both Penelope's and Tom's insecurities. Penelope becomes needy and Tom becomes distant and emotionally withdrawn. The problem is that Penelope feels that she cannot rely on Tom. What was once an adventure no longer seems so exciting. As a result Tom's impulsive nature becomes a source of discomfort for Penelope. On the other hand Tom thinks that his creativity is being stifled by Penelope's emotional needs. This belief may cause Tom to rebel, finding it difficult to commit to Penelope. This relationship, if a personal one, is likely to require a lot of freedom and an unorthodox approach in order for it to last. While this is a difficult combination for a personal union, it can be a positive one for less personal relationships such as friendships or a working project which requires creative and innovative ideas.

Tom's Sun is Trine Penelope's Jupiter

The Sun and the favourable planet Jupiter are combining suggesting that this relationship is blessed with good fortune and happiness. It is an ideal combination for an intimate relationship such as marriage because it indicates shared philosophies on life and the ability to grow together. Together Penelope and Tom land on their feet no matter how difficult a situation. They seem destined to be in the right place at the right time. Penelope and Tom enjoy each other's company, feeling all of the benefits that come with this union. Their optimism and enthusiasm are infectious, and as a couple they are popular. In particular Penelope shines as a result of her association with Tom. Penelope feels able to embrace life and all it has to offer. She is aware that her union with Tom is truly blessed and that it helps her to achieve her full potential. Tom knows that his horizons are continually expanding through his association with Penelope. Tom feels able to conquer the world. In fact it is likely that both Penelope and Tom enjoy travelling, studying or teaching together. They enjoy sharing anything that expands their minds and contributes positively to their lives.

Penelope's Sun is Trine Tom's Pluto

This combination of planets indicates a relationship, which is life changing, whether it be a friendship, love union or work association. Both Penelope and Tom feel a powerful attraction for each other. It is as if they are both compelled to relate. The nature of the relationship depends on other aspects of their relationship. It is possible that this relationship is a positive one for both Penelope and Tom bringing rewards and challenges that lead to greater fulfilment in both their lives. Power and wealth may result from this relationship. Both Penelope and Tom are ardent in their pursuits enjoying intense and fulfilling pastimes, which are ultimately life changing. However, it is also possible that both Penelope and Tom experience the less attractive aspects of this relationship. They may become embroiled in a struggle for dominance, their relationship resembling a battleground from which neither emerges triumphant. They can be either intensely loyal friends or formidable opponents. Penelope feels empowered by this union, learning to rise to the challenges set by Tom. She feels that life is more exciting and intense, thanks to her union with Tom. Tom is a powerful force in this union.

Penelope's Sun is Sextile Tom's Chiron

This is a life-changing relationship that results in both Penelope and Tom being presented with opportunities to heal past wounds in order that they may live fuller and richer lives. Together they enjoy a sense of liberation that comes from truly loving another person. Tom is more likely to take the role of teacher or healer, having a significant effect on Penelope's life choices. In this role Tom is also challenged to take a long, hard look at himself before imparting his wisdom. The adage "physician heal thyself" could be a theme for Tom. In return Penelope learns much from Tom's experiences and insights, perhaps even discovering her true-life purpose. This is true for intimate relationships, and also for student-teacher and patient-healer liaisons. Either way this can be a gentle, loving union based on mutual respect and compassion.

Penelope's Sun is Square Tom's Saturn

Many astrologers believe that a connection between the serious planet Saturn and a personal planet such as the Sun

is important, providing the cement for a long-lasting relationship. In other words, a serious planet is needed for a serious, meaningful union such as marriage. It is certainly true that the combination of the Sun and Saturn is found in many meaningful relationships. However, the planet Saturn can also cause problems. Certainly this combination indicates that Penelope and Tom both view this as a serious association, whether it is a marriage, friendship or a working partnership. Both Penelope and Tom are committed to their association. It is likely that they experienced a strong attraction in the initial stages of their relationship. When Penelope and Tom first met they each knew they had discovered a potential serious relationship, one to which they could commit and build on over a lifetime. If they believe in reincarnation, then it is likely that they felt a karmic attraction when they first met. Perhaps this was a moment of recognition when they first looked into the other person's eyes. However, the very qualities, which they seriously considered as attractive in the initial stages of the relationship, can become the source of friction if they are not careful. In particular, Tom needs to be wary of becoming too critical and judgmental. Initially Tom found Penelope's personality traits to be worthy of a committed union. He admired Penelope's qualities as complementing his own. However, it is easy for Tom to forget this attraction. As the relationship develops he feels threatened by the force of Penelope's personality and takes a superior attitude in defence. As a result Penelope feels threatened, disliking the authoritarian side of Tom. If Penelope is not careful her self-confidence is whittled away and the relationship becomes onerous. It is vital that both Penelope and Tom work at developing a stable basis for communication and understanding in this relationship. If both Penelope and Tom work at maintaining their own self-confidence as well as mutual respect then they have the makings for a very successful marriage or working relationship. Much of their success may depend on other supportive, positive connections between them.

Penelope's Sun is Opposite Tom's Neptune

Romance and love are central themes of this relationship between the Sun and the planet Neptune. This can suggest a romantic liaison in which both people are blessed with a sense of being with the right person at the right time, or it can mean a friendship that is based on a joint artistic project or spiritual interest. Perhaps they enjoy spending time in the natural surroundings of the beach or countryside. Either way Penelope and Tom are likely to enjoy escaping from the harsher realities of life into a world of their own creation. However, problems can arise when Penelope and Tom start to sacrifice their own personal needs for a misguided perception about what is good for the relationship. This behaviour can erode the creative component of the union and both Penelope and Tom may lose their self-confidence and direction in life. It is possible that, together, they may turn to drugs, alcohol or even crime in their attempts to maintain the loosening threads of their union. In particular, Penelope needs to be wary of losing her sense of self. It would be easy for Penelope to be deceived by Tom either through her own need to believe in a dream or through Tom's behaviour. Tom needs to be wary of becoming secretive and dishonest within this association. As the relationship develops Tom may become confused about the true meaning of his bond with Penelope leading to a need to hide his true feelings. On a more positive note, Penelope and Tom may have other more positive connections in their relationship astrology that enables them to work through their problems in a loving and compassionate manner.

Penelope's Sun is Square Tom's North Node

Destiny plays a strong role in Penelope and Tom's relationship. There is an instant attraction, a spark that ignites the feelings of both Penelope and Tom. However, fate can be a cruel mistress. This relationship is fraught with problems that Penelope and Tom find difficult to understand and solve. In particular Tom feels that her light is hidden under bushel. He struggles to express his true self. Perhaps Tom owes Penelope a favour that seems never to be full repaid or may Tom has an inexplicable sense of responsibility for Penelope. Whatever the scenario both Penelope and Tom face certain challenges before reaching a full understanding of this union.

Penelope's Mercury is Trine Tom's Uranus

This is an exciting and unpredictable relationship. Penelope and Tom enjoy a lively union, whether it be a romance, friendship or work association. They take pleasure in topical conversations, sparking new ideas and ways of thinking. They may also enjoy taking part in an unusual activity or pursuing an environmental, humanitarian or political cause. This combination of planets indicates intellectual, rather than emotional, stimulation. Consequently

this combination may indicate a friendship or work association, rather than a more personal union. However, an intimate relationship with other aspects is enhanced by this combination if both partners enjoy freedom. Penelope and Tom are excited by each other's minds. In particular Penelope realises that Tom sparks her creativity. Both Penelope and Tom enjoy a new-found sense of freedom in each other's company.

Tom's Mercury is Sextile Penelope's Chiron

Kind and gentle communication is an essential ingredient for success in this relationship. Through considerate interaction Penelope and Tom can develop a warm and loving relationship, whether this be a love union, work association, student and teacher connection or friendship. There is a childlike quality to this liaison, possibly Penelope and Tom share a love of children or enjoy recapturing some of their lost childhood. Through this relationship Penelope learns a vital life lesson, one that furthers her spiritual journey. In some way Tom helps Penelope to let go of intellectual insecurities, paving the way for a more wholesome approach to learning. It is possible that Penelope is a student of Tom's. In return Tom realises new skills, in particular that of communicating information with compassion and empathy.

Tom's Mercury is Opposite Penelope's North Node

Good communication is the key to many successful relationships. This union between Penelope and Tom is on the right track, despite a few disagreements along the way. There is a strong bond, which is likely to be intellectual rather than emotional. Perhaps Penelope and Tom have a common interest or friend, something that links them. Both Penelope and Tom believe that fate has played a hand in bringing them together, but there are obstacles strewn in their path. They may hold different opinions on a variety of matters. In the long run they are happy to disagree, understanding each other's rights to hold different opinions. Penelope and Tom spend much of their time together trying to sort out misapprehensions.

Tom's Venus is Trine Penelope's Chiron

Together Penelope and Tom have opportunities to heal the painful experiences of previous relationships and forge a strong and loving bond. This is an important union. When an intimate bond is formed, the love can soothe emotional pain and bring a sense of freedom and joy. On the other hand it can also reinforce a person's wounds, sending them into emotional turmoil and forming negative relationship patterns. In this case Penelope and Tom have a chance to overcome their old relating habits through their love for each other. They may even help each other view their childhood experiences in a different light. This is true whether they are lovers or friends. Penelope's love is particularly soothing for Tom, encouraging him to discover new talents. In return Tom teaches Penelope the benefits of a warm and loving relationship.

Tom's Venus is Trine Penelope's North Node

This is the combination for lovers. The North Node and Venus are both highly significant in relationship astrology indicating that this association was written in the stars. It is also likely that Penelope and Tom are in love, desiring to form a close and romantic bond, rather than remain friends only. Passion, romantic love and an intense desire to relate are central to this relationship. Within moments of meeting Penelope and Tom feel they have known each other for years. They enjoy each other's company, discovering pleasures in common. If circumstances dictate that their relationship can only be a friendship, they would be wise to tread very carefully. This is not an association to take lightly. It could easily take over Penelope or Tom's lives. In some circumstances this combination of Venus and the North Node can indicate an association formed for artistic or creative projects.

Penelope's Mars is Trine Tom's Neptune

The glue that holds Penelope and Tom together is a focus on a joint artistic, spiritual or philanthropic cause, a shared idyll of how to make the world a better place. Together they share many dreams of how to improve their lives, their environment and the world at large. They are a creative duo, never short of ideas and with the ability to inspire.

Depending on other aspects of their personalities they may or may not have the stability and endurance to create something concrete. Penelope is likely to be the leader, the person with the drive which enables them to achieve these dreams. Tom is the creative ideas person who inspires Penelope. If Penelope and Tom fail to share a common dream, then this relationship is likely to lack direction and Penelope and Tom slowly drift apart. They have difficulty maintaining a momentum necessary for a long-term bond. For this reason this combination of planets may indicate a relationship based on a shared project or past-time rather than an intimate lovers' bond. For instance Penelope and Tom may share a friendship, enjoying martial arts as a shared activity.

Penelope's Mars is Sextile Tom's Pluto

This combination of the stormy planets Mars and Pluto indicates a passionate and compelling union. The atmosphere is explosive when Penelope and Tom get together. Sexual energy seems to simmer barely under control. Both Penelope and Tom need to be wary of letting the force of their heated emotions build up. They need a positive outlet for all of their pent-up energy whether this be a challenging home renovation project or a regular work-out at the gym. Together Penelope and Tom feel able to conquer the world and are certainly a power to be reckoned with. The initial stages of the relationship are fraught with sexual tension, but the union may not be an intimate one. Rather it may be a partnership committed to hard work and a challenging project. Either way as the relationship develops, the strong and creative force of both Penelope and Tom takes over and can be directed into a mutually satisfying project. In other words Penelope and Tom can be passionate about each other or they can direct their passion into an external activity. Either way this is a dynamic and explosive relationship.

Penelope's Mars is Trine Tom's Chiron

A common goal is needed in order to make the best of this combination of the planet Mars and Chiron. If Penelope and Tom share the same drive and ambition then they can successfully overcome past failures and progress in their lives together. Together they bring an element of play and laughter into areas of their lives that were previously weighed down with pain and angst. Together their activities take on a new glow. They may share an interest in the healing arts or in teaching. Tom sometimes feels hurt that Penelope does not offer the energy and drive needed to support his ventures. As the relationship develops more support may be offered. Penelope appreciates Tom's insights and wisdom, which enable her to better achieve her goals.

Penelope's Jupiter is Conjunct Tom's Jupiter

A bountiful and loving relationship is the result of the strong influence of the planet Jupiter on this relationship. Ancient astrologers consider the planet Jupiter to be the great benefic, hence shining good fortune on this union whether it be a friendship, work association or romantic liaison. This relationship brings joy into the lives of both Penelope and Tom. The attraction is strong, although not necessarily a sexual rapport. Penelope and Tom share common goals and the impetus to explore these goals together. Their paths have crossed and it is more fun to continue their journey together. This can include journeys into the philosophical realms or adventures into other lands. Penelope and Tom share the same beliefs, possibly even common religious beliefs. They bring out the best in each other. Together they also bring out the best in other people. As a result they attract much good fortune when they join forces. They are examples of the adage "lucky in love".

Penelope's Jupiter is Trine Tom's Neptune

This is a union of empathy and understanding, particularly in the areas of spiritual and religious beliefs. Both Penelope and Tom understand and share each other's aspirations and dreams. At times their intuitive understanding of each other is so keen that they almost seem telepathically linked. It is possible that both Penelope and Tom share a spiritual or religious conviction and belong to the same group or church. This may be a central force in their association. It is also possible that they take part in a philanthropic pursuit such as mission work in a foreign country or working for the same charitable organisation. Whatever the outlet for their beliefs, both Penelope and Tom appreciate and enjoy each other's values, thus enabling them to better pursue a more altruistic path in life. Penelope and Tom brighten each other's lives through their shared beliefs.

Penelope's Jupiter is Conjunct Tom's Chiron

A beneficial and joyful relationship is the result of this combination of the planet Jupiter and Chiron. Penelope and Tom are able to close the door on problems and hurts from previous relationship and enter into this liaison with a sense of joy. Together they heal each other's emotional pain, gaining understanding and insights into relating. Penelope and Tom have common values and teach each other the joy and comfort that comes with a responsive and understanding union. Together Penelope and Tom enjoy exploring new territory, perhaps in the healing, spiritual or teaching faculties. Penelope is a positive influence on this union, bringing an optimism and enthusiasm that is attractive and bountiful.

Tom's Jupiter is Square Penelope's Neptune

When Penelope and Tom first meet they are attracted to each other's spiritual and religious values. Their imaginations are inspired by each other's differing beliefs. However, as the relationship develops the novelty wears off and conflict arises. At first Penelope and Tom may not be aware of the deterioration of this side of their association. It is an insidious process and one that Penelope and Tom find hard to understand. The problem is that their conflicting religious or spiritual values are undermining the success of their union. Secretly Tom believes that he is following the true path. He does not realise that this is a rejection of his partner's values. Penelope is more vocal in her opposition to Tom's convictions. Both Penelope and Tom have difficulty allowing each other to follow their own spiritual truth. Eventually conflict over spiritual matters takes its toll on this association. The challenge is for Penelope and Tom to discover a way in which they can both offer support and understanding for their opposing spiritual or religious values.

Penelope's Jupiter is Opposite Tom's Pluto

Obstacles are strewn along the path of this relationship because of the difficult combination of the planets Jupiter and Pluto. On the one hand Penelope and Tom feel a compelling need to relate to each other. On the other hand they find their opposing values a formidable hurdle. The problem is that they fail to understand each other at a deep level and yet this is an important component in their relationship. Penelope believes that she attempts to take an honest approach to her partnership, but is undermined by Tom's insistence on delving beneath the surface. Tom is frustrated in his efforts to get to the bottom of matters. He is particularly angry when he perceives that Penelope contradicts herself. Their challenge is to find personal meaning in their own lives, while respecting the other person's values and beliefs.

Penelope's Pluto is Conjunct Tom's Ascendant

Sparks fly when one person's Pluto connects with another person's Ascendant. This is a powerful combination indicating a dynamic relationship. Both Penelope and Tom are intensely attracted to each other and stand to learn much about themselves and relationships under the influence of this combination. Penelope has a particularly powerful role to play in Tom's life, shattering year-long habits and introducing an element of excitement. While Tom might initially feel uprooted and insecure as a result of the changes in his life, he comes to appreciate a sense of rejuvenation that comes with throwing out the old and welcoming the new. The success of this relationship depends on other aspects strengthening the long-term bond between Penelope and Tom.

GENERATIONAL VALUES



Underpinning the success of many relationships is a sense of shared values. Often this comes from simply being born into the same generation. However, sometimes it is more complex. In this section we explore whether or not Penelope and Tom share the same societal values.

Tom's Saturn is Sextile Penelope's Neptune

The planet Saturn is a vital ingredient in relationship astrology. It is the planet that represents stability and commitment and is seen by astrologers as the necessary glue that holds a relationship together on a long-term basis. Of course not everyone is seeking long-term commitment, but for those who are Saturn is a welcome sign. The planet Neptune indicates inspiration, imagination and dreams. So Penelope and Tom feel strongly drawn to each other, perhaps experiencing a sense that their relationship was written in the stars. In other words they may feel as though they were destined to meet and form a union. This could be a personal relationship or a friendship that involves a spiritual, artistic or philanthropic project. Whatever the form of their relationship, Penelope and Tom enjoy a meaningful bond. Penelope and Tom both approach the relationship from different angles and need to respect each other's differences in order for the relationship to succeed in the long term. Of course they may both agree that their union was destined to be for a short period only. When this association runs a smooth course Penelope provides the structure and security, which enables Tom to fulfil his dreams. In some cases Penelope may act as Tom's manager. In return Tom challenges Penelope's fears, teaching her to break down certain boundaries and follow her dreams.

Tom's Saturn is Trine Penelope's Pluto

The combination of the planets Saturn and Pluto indicates that this is an important relationship, although not necessarily a personal one. Penelope and Tom combine their talents in a way that enhances their lives. Penelope provides structure and security so that Tom can safely make any changes necessary in his life. In return Tom helps Penelope break through any barriers created by his fears. For these reasons this can be a dynamic and satisfying union.

Tom's Uranus is Trine Penelope's Chiron

Healing and growth are possible in this relationship. Penelope and Tom are able to leave behind painful memories of previous associations and pave new paths of understanding. Together they enjoy exploring new ways of communicating and learning about each other and their own personal lives. They are an inspiration to each other. Penelope challenges Tom to explore new avenues in his life. Penelope motivates radical changes in Tom's life, which are healing in certain ways. Tom offers new insights which inspire Penelope to new creative heights. Together Penelope and Tom may undertake an inspirational teaching project or explore unorthodox methods of healing.

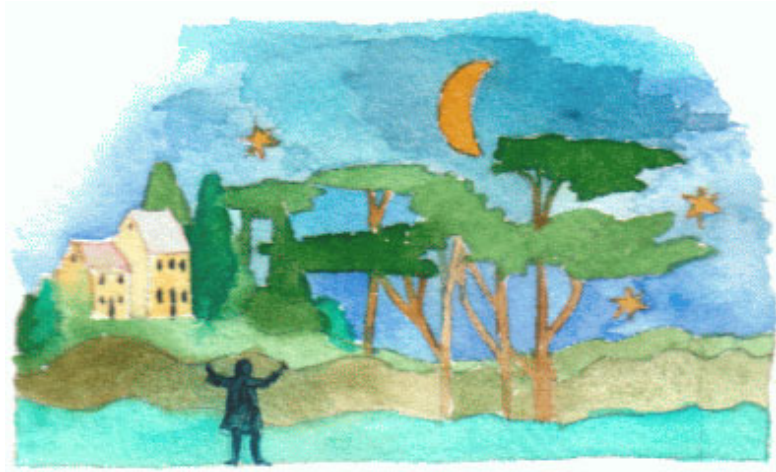
Penelope's Neptune is Square Tom's Pluto

The combination of the planets Neptune and Pluto is not usually a significant one in relationship astrology. It indicates a conflict in values, which can erode the foundations of a relationship. However, many other combinations of planets will make a more significant contribution to this union between Penelope and Tom.

Penelope's Neptune is Square Tom's Chiron

Penelope and Tom cannot fully enjoy this relationship because of fears and insecurities. They both have difficulty letting go of past hurts, which adversely affect this current union. As a result Penelope and Tom are both pre-occupied nursing their own hurts and cannot see the other person's point of view. Any joint projects in the arts, spiritual matters or medicine are particularly prone to misunderstandings and difficulties. Penelope often feels confused, wondering why Tom reacts so negatively to her actions. In turn Tom believes that Penelope fails to fully understand and appreciate his talents. Together they need to take time to listen to each other and gently discuss areas of contention.

CONCLUSION



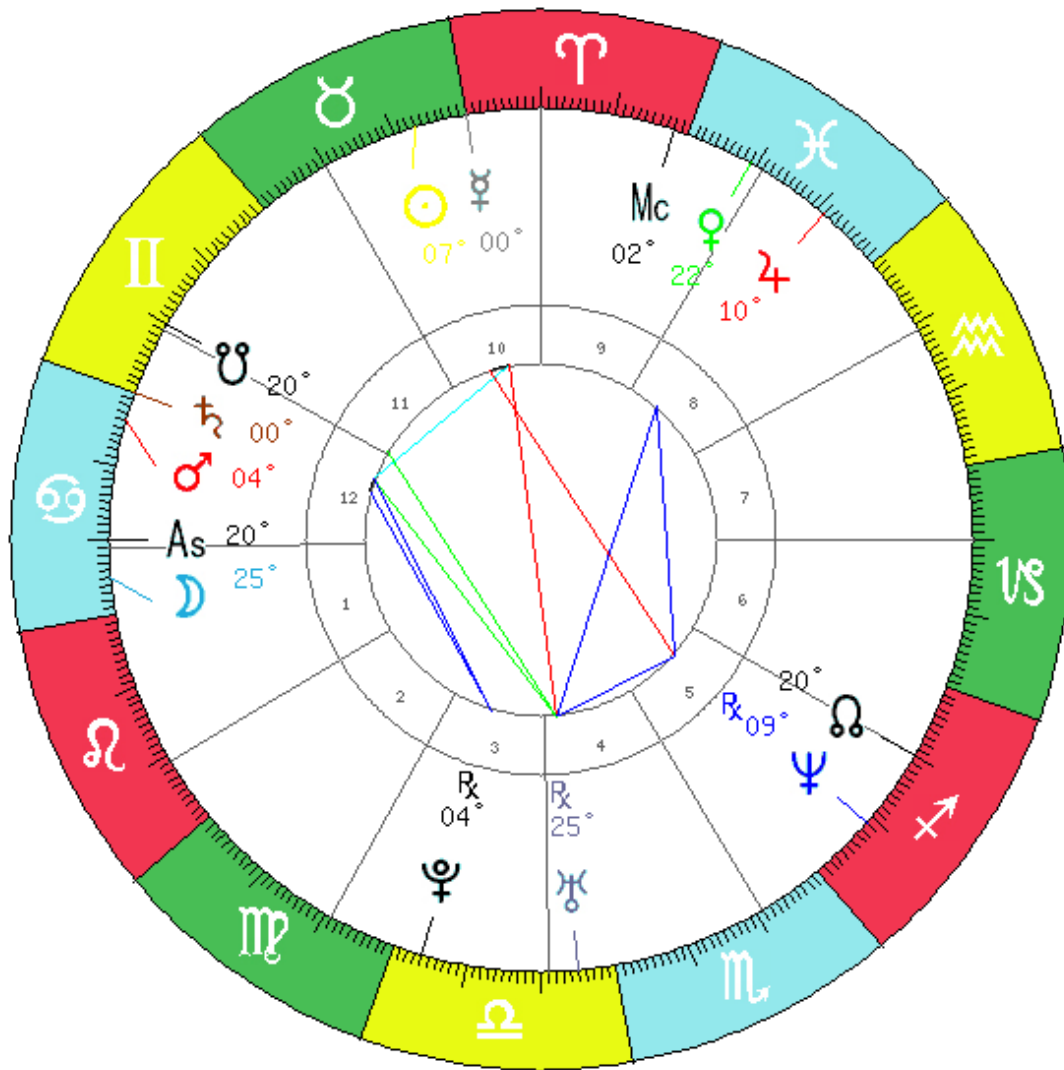
The text in this report has been written by Australian astrologer Stephanie Johnson. Stephanie is a founder of Esoteric Technologies, the company that creates the Solar Fire suite of astrology products. She has helped create, design, develop and author Solar Fire and the other products. In particular she is the author of many of the Solar Writer range of astrology report writers. She is also the Marketing Director for Esoteric Technologies. Stephanie runs her own Seeing With Stars astrology consultation business as well as editing the Australian Data Collection. She holds a Federation of Australian Astrologers' Practitioner's Certificate and Diploma and is a member of the Federation of Australian Astrologers. She is a student of Medieval Astrology and the Ancient Wisdom teachings. She has lectured at national conferences, and her astrology articles have appeared in Australian publications including the FAA Journal and the Astrological Monthly Review. Before commencing her professional astrology career Stephanie was a journalist for 15 years in Australia, England and the USA.

The illustrations have been created by artist, illustrator and teacher, Janet Bridgland. Janet divides her time between her home and garden in Bridgewater, overlooking the Heysen Trail, and working in the second hand bookshop Back Pages Books, in the cosmopolitan suburb of Unley in Adelaide where she sells books, paints and teaches water colour painting and drawing. Her beautiful illustrative work can be discovered at: www.janetbridgland.com.au

This report is meant more of an introduction to the wonders of astrology rather than a complete course in its intricacies. Further studies, or a consultation with a professional astrologer, are encouraged to explore this most ancient scientific and philosophic tool.

If you would like further information please contact Esoteric Technologies Pty Ltd, PO Box 159, Stepney SA 5069 Australia. Phone/Fax (08) 8365 1117. Email: sales@esotech.com.au

PENELOPE CRUZ 28 APR 1974 MADRID SPAIN 40N24 (LAT) 3W41 (LONG)



TOM CRUISE 03 JUL 1962 SYRACUSE UNITED STATES 43N02 (LAT) 76W08 (LONG)

